

10090 Enclave Circle Concord

Gorgeous Custom Home On Over Two Acres!

PROPERTY DETAILS



Listing Price: **\$1,395,000**

Listing Address: 10090 Enclave Circle

Concord NC 28027

Bedrooms: 5

Full Baths: 5

Partial Baths: 0

SQ FT: 5800

Lot Size: 2.21 Acres

Style: Traditional

Garage: 4 Car

Heat Source: Gas

Schools: Cox Mill

QR Code:

On a SmartPhone?
Scan the QR code
to see this listing



PROPERTY DESCRIPTION

Stroll leisurely up to this **masterfully crafted mansion** on a sprawling two plus acres of mature trees. As you arrive at the massive stone entry, step-in to the impressive entrance hall illuminated by a chandelier suspended from the **soaring vaulted ceiling** and accented by a gracious wrought iron staircase. Meander your way throughout the first and second level and you will find yourself surrounded in distinctive architecture and design. Relish in the stone and stucco exterior, 5 bedroom, 5.5 bath estate featuring stone, tile, granite, wainscoting, arched transoms, floor to ceiling windows, sparkling accent lighting, smooth curves, dramatic tray ceilings, custom cabinetry, seven piece moldings and chair rail of **unsurpassed quality and craftsmanship**. The sociable formal dining room with dazzling chandelier is sure to impress the most distinguish guest. Pass through the **butler's pantry** with built-in china cabinets, **granite counters**, sink and easy access serving. Imagine all the delicious meals you can create in this stunning designer kitchen with Viking Stainless Steele appliances, six burner gas stove with pot filler, two ovens, **gorgeous cabinets**, enormous **walk-in pantry**, wet bar and spectacular granite counters. Family and friends can join the cook at the massive granite bar or in the charming breakfast room combined with supreme views of nature. Indulge in any of the multiple living areas featuring fireplaces, extensive attention to details, spectacular views and all the comforts of home. A **luxurious main level master retreat** and guest suite provides a soothing oasis of special conveniences and comforts at day's end. Indulge in the any of the five lavish bathrooms with granite vanities, tile, separate shower and a whirlpool tubs. Grab a good book and step outside on the delightful and charismatic **stone veranda** persuading you to unwind; it's a place one could happily linger throughout the day. Drive under an arched passageway to ample parking and a **four bay garage**. Elegant formal detailing and distinctive design are matched by a wealth of comfort and pleasant living. The current owner thought of everything now this home just needs you to be complete. For more info please call 800-735-5919 (ID #3086).

CONTACT INFORMATION

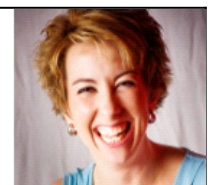


Leigh Brown and Associates
RE/MAX Executive Realty
leighbrowndassociates.com
7752 Gateway Lane, Suite 204
Concord NC 28027
704-705-7036
866-440-7136
leigh@leighsells.com

Your Source for North Carolina Real Estate



LEIGH BROWN
& ASSOCIATES





BECAUSE REAL ESTATE IS A FAMILY BUSINESS

704.705.7036



Equal Housing Opportunity

Property information deemed reliable but not guaranteed and should be verified.

Copyright © 2003-2012 Real Pro Systems LLC. All rights reserved.