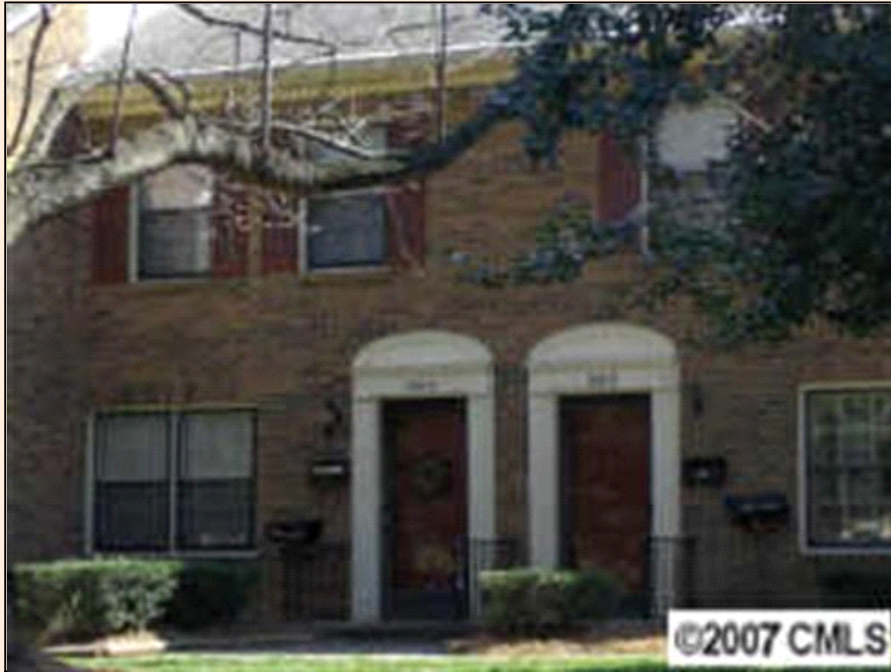


6835-D Farmingdale Dr Charlotte

PROPERTY DETAILS



Listing Price: \$62,500

Listing Address: 6835-D Farmingdale Dr
Charlotte NC 28212

Bedrooms: 2

Full Baths: 1

Partial Baths: 1

SQ FT: 928

Heat Source: Electric

QR Code:

On a SmartPhone?
Scan the QR code
to see this listing



PROPERTY DESCRIPTION

Move in ready, convenient location! Great brick town home with two spacious bedrooms up, each with a large closet. Large family room on the main level. Kitchen with great cabinet and counter space. Private courtyard patio with a storage room and back gate. HVAC replace in 2000m exterior painted in 05. Pool community minutes from everything!!

CONTACT INFORMATION



Leigh Brown and Associates
RE/MAX Executive Realty
leighbrownandassociates.com
7752 Gateway Lane, Suite 204
Concord NC 28027
704-705-7036
866-440-7136
leigh@leighsells.com

Your Source for North Carolina Real Estate



LEIGH BROWN
& ASSOCIATES

BECAUSE REAL ESTATE IS A FAMILY BUSINESS

704.705.7036



Equal Housing Opportunity

Property information deemed reliable but not guaranteed and should be verified.

Copyright © 2003-2012 Real Pro Systems LLC. All rights reserved.